

Upgrading to PTW Version 9.0

from V8.0 or Earlier

This Document Includes:
Project Backups
Installation
Importing Library Models and Other Files

Important Notes:

- Projects created and/or opened in PTW V9.0 are **NOT** backwards compatible with older versions of the software.
- PTW V9.0 will only work for licenses that have a valid maintenance agreement at the time of release (April 29, 2019).
- Before you install PTW V9.0, it is good practice to create backups on all of your projects in V8.0 for safekeeping and archiving purposes.



Creating Project Backups

You must use your existing version (V8 or older) of the PTW software to create backups.

1. Start PTW V8.0 and open a project.
2. Click on the Project menu > Backup.
3. Type in a backup name and save it to a directory where you can easily find it. This will create a folder at that location with all the information and data you need to run the project, including a condensed library with all the library files used within the project.

Software Installation

1. Rename your existing PTW32 folder. Go to your C: drive using Windows Explorer.
2. Look for the PTW32 folder that contains your V8.0 software. If you have more than one PTW32 folder, you should remove the ones that are not being used. Make sure you do not have any important projects or files you need in those folders.
3. Rename your PTW32 folder to **PTW32_V8**.
4. Install PTW V9.0. (Default as C:\PTW32)
5. If you are using a network key, copy these two files below into the same directories for V9.0 (C:\PTW32) so your new software can find the network key.
 - C:\PTW32_V8\bin\nethasp.ini
 - C:\PTW32_V8\lib\nethaspip.ini (if it exists)
6. If you did not create any custom library models, forms, arc flash labels, or Datablock Formats, or want to start from a fresh installation, then this completes the installation process. You may start the new V9.0 software.

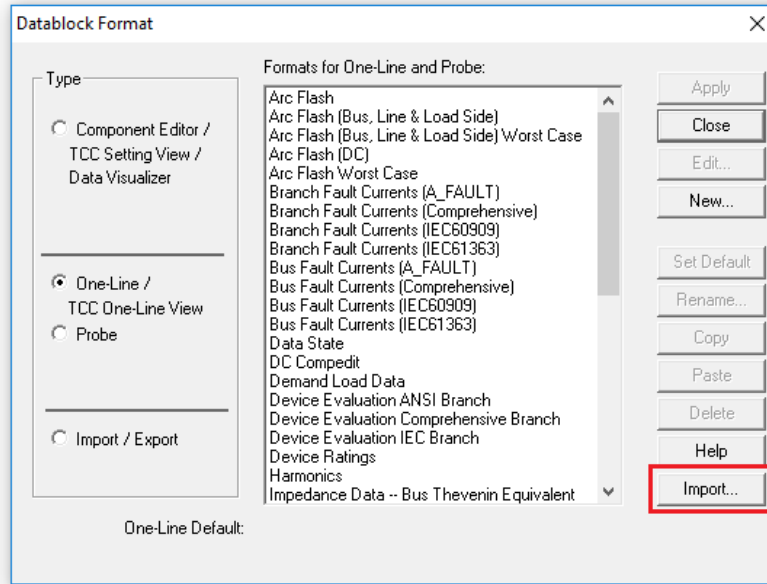
Importing Custom V8.0 Libraries

- Custom files/devices are library files that you have built yourself or files that you have added to your PTW library file.
 - Only one official library file is included with PTW V9.0 (C:\PTW32\Lib\Ptw.lib). It is recommended that you import all your custom library models into this file)
1. Start PTW V9.0.
 2. Click on the Document menu > Library > PTW Library and click OK.
 3. Browse to and open C:\PTW32_V8\Ptw.lib.
 4. Repeat steps #2 to open your new V9.0 library. Browse to and open C:\PTW32\Lib\Ptw.lib.
 5. With both of these library file windows open, cascade the two library windows and expand out the CAPTOR tree to see all the sections.
 6. Importing your old library models is a simple copy and paste process. Find the models that you want to copy. Select/highlight it, right click, and select Copy.
 7. Navigate to the same section in your new V9.0 library, right-click on the right hand side, and select Paste.
 8. Repeat these steps until all the devices you need have been copied over.

For more information on copying and pasting models between libraries see this FAQ:
<https://support.skm.com/KB/View/15072-merging-libraries>

Importing Custom V8.0 Datablocks

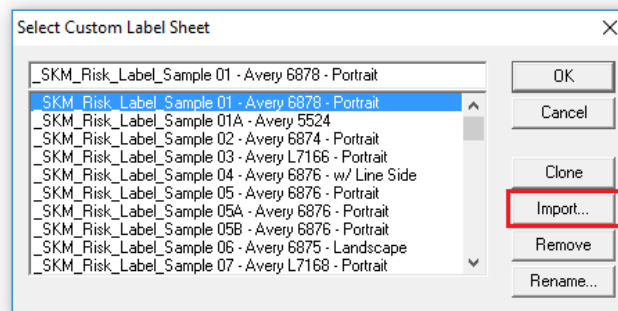
1. Start PTW V9.0.
2. Click on Run menu > Datablock Format. Then click the “Import” button.



3. Browse to C:\PTW32_V8\Lib. Select and open an .fmt file
 - Draw.fmt (One-line Datablocks)
 - Compedit.fmt (Component Editor Datablocks)
 - ImpExp.fmt (Import/Export Datablocks)
4. A selection of available Datablock formats will be displayed. Select the custom Datablock formats that you want to import and click OK.

Importing Custom Arc Flash Labels

1. Start PTW V9.0.
2. Click on Run menu > Arc Flash Evaluation.
3. Click on the Custom Label button.
4. Click on the Designer button.
5. Click on the Styles button to see a list of label labels shipped with PTW V9.0.
6. Click on the Import button and select and open C:\PTW32_V8\Lib\CustomLabel.dat
7. Select the labels you want to import. Click OK import your old labels.



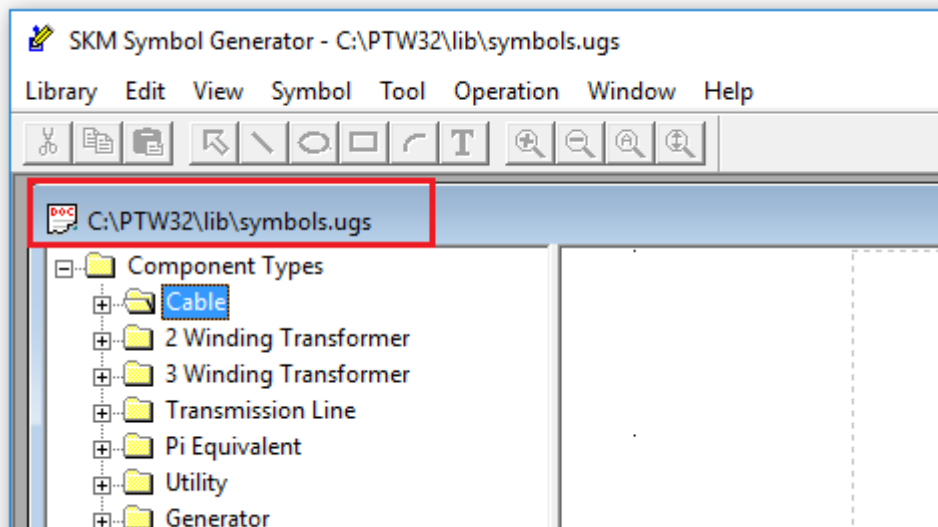
Importing Custom Arc Flash PPE Tables

The PPE table is saved in a file called FR_Clothing.ss3 (or FR_Clothing_Metric.ss3).

1. Close PTW V9.0.
2. Using windows explorer, copy C:\PTW32_V8\Lib\FR_Clothing.ss3.
3. Paste into C:\PTW32\Lib

Importing Custom Online Symbols

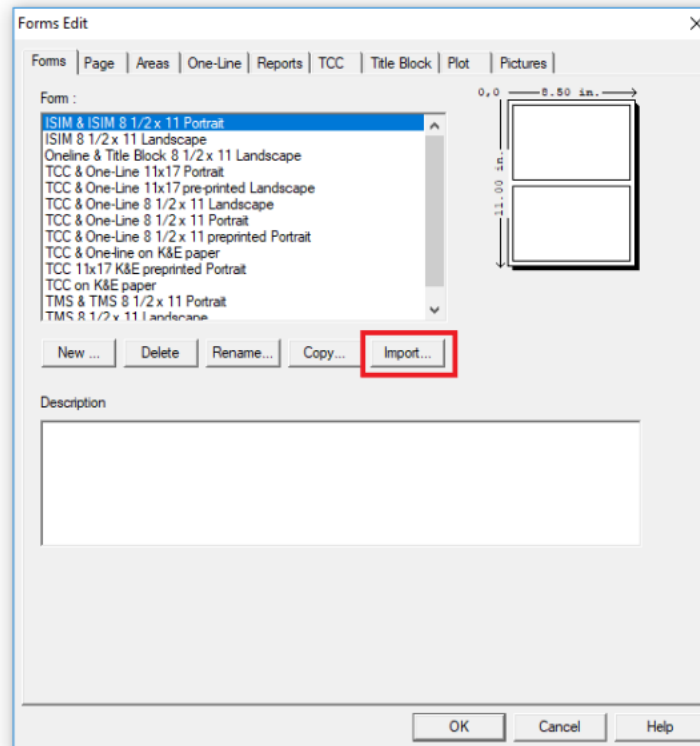
1. Close PTW V9.0.
2. Start the Symbol Generator program through the Start menu or (C:\PTW32\bin\Symgen.exe).
3. The V9.0 symbols library is automatically loaded. Notice that the symbols library file path is C:\PTW32\lib\symbols.ugs.



4. Open the V8.0 Symbols.ugs file from C:\PTW32_V8\Lib\Symbols.ugs.
5. Importing your old symbol models is a simple copy and paste process. Find the V8.0 models that you want to copy. Select it, right click, and select Copy.
6. Navigate to the same section in your new V9.0 symbols library, right-click on the tree, and select Paste.
7. Repeat these steps until all the symbols you need have been copied over.

Importing Custom Print Forms

1. Start PTW V9.0.
2. Click on Document menu > Form Layout. Then click the “Import” button.



3. Browse to and open C:\PTW32_V8\Lib\PTWFORMS.FRM
4. Select the forms you want to import and click OK.

Questions?

Contact SKM Technical Support at support@skm.com with your serial number.
Or call 310-698-4700 ext 2 Monday – Friday from 7am – 5pm Pacific Time.